

For Sale 2.5 ac

4 Custom Home Sites with Engineering

NEC of Gilespe St and Cougar Ave

Clark County, Nevada

FINAL MAP READY TO BE RECORDED—READY TO BUILD



To take advantage of this opportunity, please contact:

Gidget Graham

702.501.5200

ggraham@cprnv.com

Cprnv.com



Integrity | Service | Results

Disclaimer: Crown Point does not warranty nor represents, expressed or implied, is made to the accuracy of the information stated within this marketing material—Independent due diligence should be conducted.

For Sale 2.5 ac

4 Custom Home Sites with Engineering

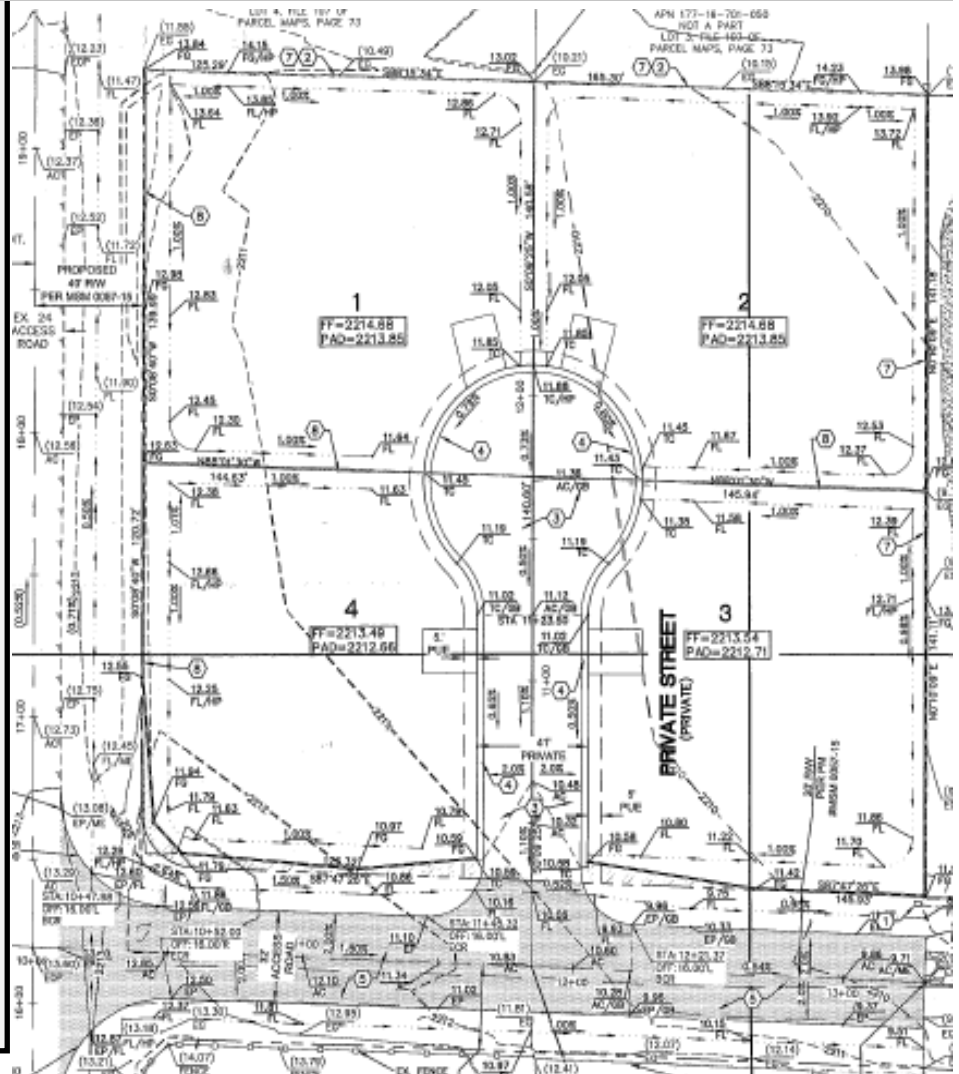
NEC of Gilespe St and Cougar Ave

Clark County, Nevada

FINAL MAP READY TO BE RECORDED—READY TO BUILD

Property Details:

- Offered at: \$390,000.00
- Zoning: RE
- Water/Sewer near property line
- Engineers Estimate Available Upon Request
- Final Map is at approvable state with Clark County.
- When recorded will produce 4—1/2 ac. residential home sites.
- 177-16-701-012



To take advantage of this opportunity, please contact:

Gidget Graham

702.501.5200

ggraham@cprnv.com

Cprnv.com



Integrity | Service | Results

Disclaimer: Crown Point does not warranty nor represents, expressed or implied, is made to the accuracy of the information stated within this marketing material—Independent due diligence should be conducted.

For Sale 2.5 ac

4 Custom Home Sites with Engineering

NEC of Gilespeie St and Cougar Ave

Clark County, Nevada

FINAL MAP READY TO BE RECORDED



Location Details

- 1.5 miles from Las Vegas Blvd
- .5 miles from Pebble / .25 miles from Wigwam
- Freeway access at Windmill I15 & I215

To take advantage of this opportunity, please contact:

Gidget Graham

702.501.5200

ggraham@cprnv.com

Cprnv.com



Integrity | Service | Results

Disclaimer: Crown Point does not warranty nor represents, expressed or implied, is made to the accuracy of the information stated within this marketing material—Independent due diligence should be conducted.

For Sale 2.5 ac

4 Custom Home Sites with Engineering

NEC of Gilespe St and Cougar Ave

Clark County, Nevada

FINAL MAP READY TO BE RECORDED



To take advantage of this opportunity, please contact:

Gidget Graham

702.501.5200

ggraham@cprnv.com

Cprnv.com



Integrity | Service | Results

Disclaimer: Crown Point does not warranty nor represents, expressed or implied, is made to the accuracy of the information stated within this marketing material—Independent due diligence should be conducted.